



www.agfmfg.com

AGF Manufacturing

QUALITY COMPONENTS FOR FIRE SPRINKLER SYSTEMS



PART NUMBER FINDER
www.agfmfg.com/part-number-finder

PURGENVENT™

AUTOMATIC AIR VENTS



Model 7900AAV

This model includes a 1" isolation valve with internal barrel strainer, purge valve with hose connection, and a 7900V automatic air vent that continuously vents air from the wet fire sprinkler system to prevent internal corrosion in metallic pipe.



Model 7930ECA

The Model 7930ECA adds an end cap to the 7900AAV for easy installation at the end of system branch lines. They are available with end cap sizes from 2" to 8".



Model 7940BLE

The Model 7940BLE adds a branch line extension pipe with coupling for easy installation at the end of system branch lines. They are available with pipe sizes from 2" to 8" and include NFPA signage.



Model 7950ILV

For installations with hard the access high points, this model features a separation chamber that installs in line after the floor control assembly. It also includes a patented air scoop that helps direct air to the 7900V. They are available with pipe sizes from 2" to 8".

BABA (Buy America, Build America) Compliant

Manual Air Vent



Model 7910MAV

Manual air vent with 1/2" female thread connection and internal ball check to prevent leaks when filling the system.

Air Vent Validator Kit



Model 7905

PURGENVENT Air Vent Validator Kit is used to test the Model 7900AAV, 7930ECA, 7940BLE, and 7950ILV for proper operation. The kit includes a whistle or visual indicator, inlet adapter, and compressed air.

NFPA 13

7.1.5 Air Venting

A single air vent with a connection conforming to 8.16.6 shall be provided on each wet pipe system utilizing metallic pipe.

8.16.6* Air Venting

The vent required by 7.1.5 shall be located near a high point in the system to allow air to be removed from that portion of the system by one of the following methods:

- Manual Valve, minimum 1/2" (15mm) size
- Automatic air vent
- Other approved means



Starting in 2016, NFPA requires the inclusion of at least one air vent on each wet pipe sprinkler system that utilizes metallic pipe to help mitigate internal pipe corrosion due to trapped air. Developed with input from sprinkler contractors, system designers, and fire protection engineers, the patented AGF PURGEVENT valves are the most complete air vent product line on the market.

Engineering specs available online at: CADDdetails, bimobject, ARCAT, and masterspec

UL Listed and FM Approved

UL Listed and FM Approved
7900V air vent.

No Drain or Drip Pan Required

Conical shaped air vent with recessed outlet and internal bubble breaker prevents water discharge.

Integral Isolation Valve

Eliminates extra connections and potential leak points. Allows for quick isolation and easy installation.

Easy Installation

Threaded 1" connection or grooved end cap for easy placement near a high point in the system.

Integrated Barrel Strainer

Stainless steel strainer prevents dirt and debris from entering the vent and is easily cleaned with system pressure through the purge valve to meet NFPA 25 requirements.

Faster Maintenance

Purge large amounts of air for faster system filling and draining. Open the purge valve to flush the strainer or remove the purge valve for a more thorough cleaning. Includes hose connection with cap. Model 7905 Air Vent Validator Kit can easily test the 7900V air vent for proper operation.

Threaded Connection*

UL/FM required threaded connection for optional accessories or drain line.

*NFPA does not require a drain line.

*AGF does not require a drain line.

Compact Design

Requires less than 5" of clearance above the pipe*. Most compact automatic air vent assembly available.

*When using Model 7900ECA.

CAL Fire Approved

CA State Fire Marshall approved.

7610-2281 : 0500

Vacuum Break

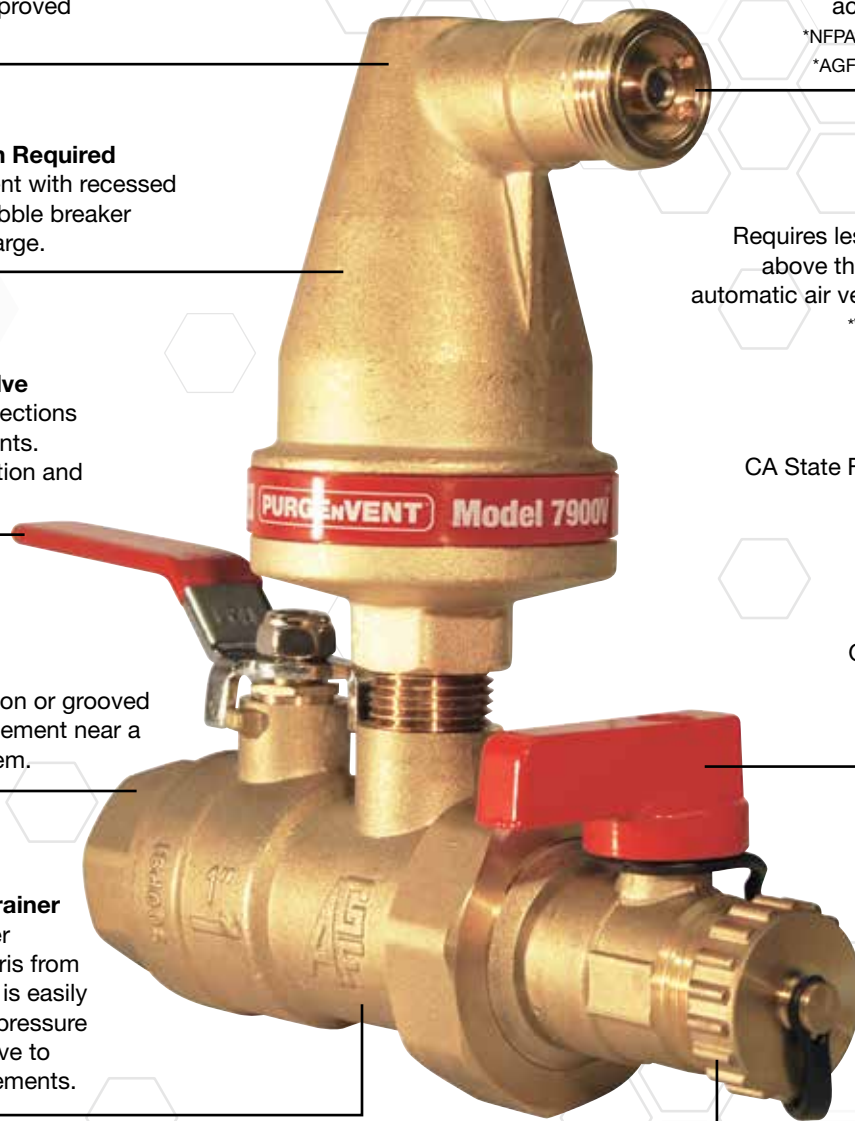
Open purge valve while draining the system to protect system component gaskets.



Learn More

NFPA 13 Compliant

Meets code that requires an air vent on each wet pipe fire sprinkler system utilizing metallic pipe.



COLLECTANDRAIN®

PREASSEMBLED AUXILIARY DRAINS

Model 5300

Fully assembled auxiliary drains that meet NFPA 13 standard and feature galvanized steel or black steel piping components. Includes required NFPA signage in signal red for a consistent, appealing appearance. Available with an optional Model 5100ALBV water detector alarm.

Auxiliary drains allow for removal of collected system condensation while minimizing loss of pressure.



5300A
(Galvanized)



5300B
(Black Steel)



5300ALBV
(Galvanized)



5300ALBV-B
(Black Steel)



Learn More

Model 5200 & 5100

Fully assembled auxiliary drains that meet NFPA 13 standard and feature galvanized steel or black steel piping components. Includes a patented anti-trip plate for assured security against improper maintenance and vandalism. Includes required NFPA signage in signal red for a consistent, appealing appearance. Model 5100 includes an Model 5100ALBV water detector alarm.

Auxiliary drains allow for removal of collected system condensation while minimizing loss of pressure.



5200A
(Galvanized)



5200B
(Black Steel)



5100A
(Galvanized)



5100B
(Black Steel)



Learn More

Need Help?

AGF technical staff is available to answer any questions you may have. Email all questions to:

techsupport@agfmfg.com

To find a distributor in your area visit the AGF website at:

www.agfmfg.com



Model 5100ALBV

The 5100ALBV is a water detector with alarm for auxiliary drains that detects water and alerts for needed maintenance to prevent possible freezing and breaking. The 5100ALBV can be added to existing auxiliary drains or ordered on auxiliary drain models 5100A and 5300ALBV. It can be powered by a 9V battery, 12-24 VDC, or optional 110V plug. For remote notification the 5100ALBV can be wired to a fire control panel or building management system (BMS).



HEATED AUXILIARY DRAIN CABINETS

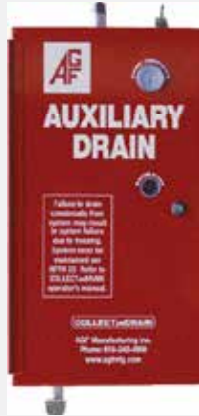
FLOODELIMINATOR Model 5900

The **FLOODELIMINATOR** protects facilities from excessive flooding when a dry fire sprinkler system's auxiliary drain fails due to freezing and breaking, improper maintenance, vandalism, or an accident. Install the Model 5900 above the existing auxiliary drain and when a surge of water from a tripped dry valve reaches the **FLOODELIMINATOR** it closes its internal mechanism, and shuts down the release of large amounts of water from the system.

The Model 5900 can be added to any **COLLECT_{AND}DRAIN** model.



Product Video



COLLECT_{AND}DRAIN Cabinets

- Protects auxiliary drain from freezing temperatures and vandalism
- Includes an energy efficient, thermostatic heater
- Meets NFPA standard
- Includes highly visible, safety red, lockable cabinets with required NFPA signage
- Can be wire to a fire control panel or BMS for remote notification
- Available in galvanized or black steel pipe
- Suitable for interior or exterior installation (all-weather cover available - Model 5680A)

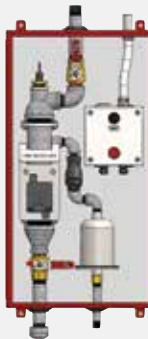


Model 5400 - Freeze Protection

The Model 5400 heated auxiliary drain cabinet includes all of the benefits listed above. It's also available with an Auto Dialer or Heater Operation Trouble (HOT) monitor.



Learn More

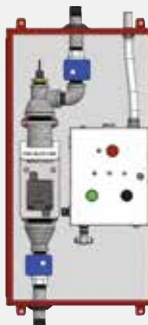


Model 5450 - Self-Maintaining

The Model 5450 incorporates all the benefits of the Model 5400 plus a unique self-maintaining design that prevents the auxiliary drain from filling beyond the safety level of the heated cabinet and automatically sheds condensation from the collection assembly. Available with a Heater Operation Trouble (HOT) monitor.



Learn More



Model 5500 - Automated Draining

The Model 5500 incorporates all the benefits of the Model 5400 and features motorized supply and drain valves that can operate with the push of a button, locally or remotely. In fully automatic mode the auxiliary drain will operate when the float switch senses the drain is almost full saving facility owners significant hours of maintenance and concern.



Learn More

COMMERCIAL RISERS

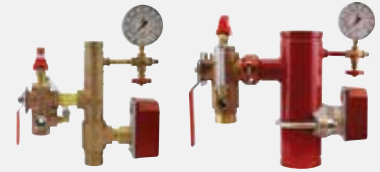
Model 8000 - Standard Riser

Model 8000 commercial risers are floor control assemblies that meet NFPA standard (2007 and earlier) that do not require a pressure relief valve. Models feature a bronze or steel body (sch. 10 standard, sch. 40 available) and include a flow switch, TEST_{AND}DRAIN Model 2500, Model 7600 3-way universal valve, and a Model 7500 pressure gauge. Bronze models are available with grooved or threaded connections in 1¼"-2" sizes. Steel models are available with grooved connections in 2"-8" sizes. K2.8 to K25 orifice size options are available for most models.



Model 8011 - With Pressure Relief

Model 8011 commercial risers are floor control assemblies that meet NFPA standard. Models feature a bronze or steel body (sch. 10 standard, sch. 40 available) and include a flow switch, TEST_{AND}DRAIN Model 2511A with Model 7000L pressure relief valve and drain trim, Model 7600 3-way universal valve, and a Model 7500 pressure gauge. Bronze models are available with grooved or threaded connections in 1¼"-2" sizes. Steel models are available with grooved connections in 2"-8" sizes. K2.8 to K25 orifice size options are available for most models.



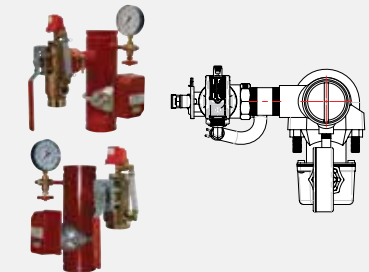
Model 8511 - with Hose Test Connection

Model 8511 commercial risers are floor control assemblies that meet NFPA standard. Models are available in 2"-3" sizes and feature a steel manifold (sch. 10 standard, sch. 40 available) hose test connection, flow switch, Model 2511A TEST_{AND}DRAIN valve with Model 7000L pressure relief valve and drain trim, Model 7600 3-way universal valve, and a Model 7500 pressure gauge. The Model 8511Z is available in a 2½" size and includes a Zurn pressure reducing valve.



Model 8611 - Corner Risers

Model 8611 commercial risers are floor control assemblies designed to fit into corner or close to ceiling installations. Models feature a steel body (sch. 10 standard, sch. 40 available) with grooved connections and include a flow switch, TEST_{AND}DRAIN Model 1011A (drain to right) or 2511A (drain to left) with Model 7000L pressure relief valve and drain trim, Model 7600 3-way universal valve, and a Model 7500 pressure gauge. 8611 models are available in 2"-6" sizes with K2.8 to K25 orifice size options.



Ultimate RiserPACK Assemblies

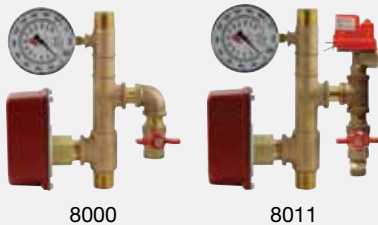
Ultimate RiserPACK assemblies add a butterfly control valve, check valve, or butterfly control valve and check valve to 8000, 8011, or 8611 models. All Ultimate RiserPACK models include a flexible stainless steel drain line that fits the TEST_{AND}DRAIN valve and are available in 2"-8" sizes with grooved connections. K2.8 to K25 orifice size options are available for most models.





13D & 13R RESIDENTIAL RISERS

1" 13D Risers



8000

8011

1" RISERPACK models are designed to meet NFPA 13D standard for one and two family residential fire sprinkler systems. Model 8000 13D features a bronze manifold and includes a flow switch, Model 7500 pressure gauge, and a 3/4" drain valve.

Model 8011 13D features a bronze manifold and includes a flow switch, Model 7500 pressure gauge, 3/4" Model 7200L pressure relief valve, and a 3/4" drain valve.

1 1/4", 1 1/2", and 2" NFPA 13D Risers



Model 8000 13D

Model 8000 13D RISERPACK floor control assemblies are designed to meet NFPA 13D standard for one and two family residential fire sprinkler systems. Model 8000 13D features a bronze manifold and includes a flow switch, 1" INSPECTORSTEST Model 3011BV with test orifice, and a Model 7500 pressure gauge.



Model 8011 13D with Pressure Relief

Model 8011 13D RISERPACK floor control assemblies are designed to meet NFPA 13D standard for one and two family residential fire sprinkler systems. Model 8011 13D features a bronze manifold and includes a flow switch, 1" INSPECTORSTEST Model 3011BV, Model 7000L pressure relief valve, and a Model 7500 pressure gauge.

1 1/4", 1 1/2", and 2" NFPA 13R Risers



Model 8000 13R

Model 8000 13R RISERPACK floor control assemblies are designed to meet NFPA 13R standard for multi-family residential fire sprinkler systems. Model 8000 13R features a bronze manifold and includes a flow switch, 1" INSPECTORSTEST Model 3011BV, Model 7600 3-way universal valve, and a Model 7500 pressure gauge.



Model 8011 13R with Pressure Relief

Model 8011 13R RISERPACK floor control assemblies are designed to meet NFPA 13R standard for multi-family residential fire sprinkler systems. Model 8011 13R features a bronze manifold and includes a flow switch, 1" INSPECTORSTEST Model 3011A with Model 7000L pressure relief valve, Model 7600 3-way universal valve, and a Model 7500 pressure gauge.

Lockable Pressure Relief Valves



7000L



Learn More

Model 7000L/7200L

The AGF 1/2" Model 7000L and 3/4" Model 7200L pressure relief valves are designed to be temporarily locked out during hydrostatic testing so they do not have to be removed from the system. Both valves are 175 PSI rated (7000L is also available in 200, 225, and 300), UL Listed, and FM Approved.

TEST_{AND}DRAIN[®]

STILL THE ORIGINAL - Beware of Imposters

AGF designed the first TEST_{AND}DRAIN single-handle ball valve to replace the 17 connection, inspector's loop assembly. The compact design is an industry standard. They are available in 3/4" to 2" sizes with NPT or groove connections and a full range of orifice sizes. All models are UL Listed and FM Approved.

TEST AND DRAIN VALVES

With Pressure Relief

TEST_{AND}DRAIN valves provide the test and express drain function for wet fire sprinkler systems and are an efficient way to meet NFPA standard that requires a pressure relief valve on every system. They are available in multiple configurations to meet any installation requirement.



1011A



2511A



Rebuilding a Valve

Model 2511A is now available in 1", 1 1/4", and 2" grooved.

Standard Models

TEST_{AND}DRAIN valves provide the test and express drain function for fire sprinkler systems. The Model 1000 and 2500 are suitable for wet or dry systems. They are available in many configurations to meet any installation requirement. All models feature an access port for system integrity testing.



1000



2500



Adding Pressure Relief

Model 2500 is now available in 1", 1 1/4", and 2" grooved.

INSPECTORSTEST

INSPECTORSTEST valves provide the test function for wet or dry fire sprinkler systems. The 1/2" outlet can be used for system integrity testing or for the installation of a pressure relief valve.



3011BV

3011A

3011SG

CORRinSITE

Corrosion Monitors

CORRinSITE corrosion monitors are designed to monitor actual pipe wall loss because they install directly into the system and not into an isolated system loop.

Model 7700

The Model 7700 is available in sch. 10 or sch. 40 black steel with a red powder coat finish or galvanized steel in sizes 2" to 8". Model 7700 corrosion monitors are ideal for new system installations.



Model 7800

The Model 7800 uses a black steel with a red powder coat finish, or galvanized steel mechanical tee in sizes 2" to 8". Model 7800 corrosion monitors are ideal for retrofitting onto existing systems or installing into new systems.



REMOTEST

The REMOTEST is a remotely operated inspector's test and drain valve designed to integrate into an auxiliary panel, fire control panel, BMS, or a simple wall switch to allow one person to activate each specific system, or group of systems, from one central location when performing the inspector's test. Model 1211A includes a Model 7000L pressure relief valve (175 PSI) and drain trim; other PSI ratings available (200, 225, and 300). The Model 7000L can be temporarily closed during hydrostatic testing so it doesn't have to be removed from the system.



1211A



1200